

## ATEM Television Studio HD



ATEM Television Studio HD is the first production switcher designed for both broadcasters and AV professionals. It includes 4 SDI and 4 HDMI inputs with re-sync on all inputs so you can use it with broadcast or consumer cameras. ATEM Television Studio HD is packed with high end features and is perfect for live production, episodic television programming, web shows, AV or even live coverage of gaming competitions! Simply plug in cameras, game consoles or computers and start switching live!

**\$995**

### Connections

#### Total Video Inputs

8

#### Total Outputs

8

#### Total Aux Outputs

1

#### SDI Rates

270Mb, 1.5G, 3G.

#### Total Audio Inputs

2 x XLR.

#### Total Audio Outputs

None, embedded audio only.

#### Timecode Connection

None.

#### SDI Video Inputs

4 x 10-bit SD/HD switchable. 2 channel embedded audio.

#### HDMI Video Inputs

4 x HDMI type A, 10-bit SD/HD switchable. 2 channel embedded audio.

#### Reference Inputs

Tri-Sync or Black Burst.

#### Video Input Re-Sync

On all 8 inputs.

#### SDI Program Outputs

5 x 10-bit SD/HD switchable.

#### HDMI Program Outputs

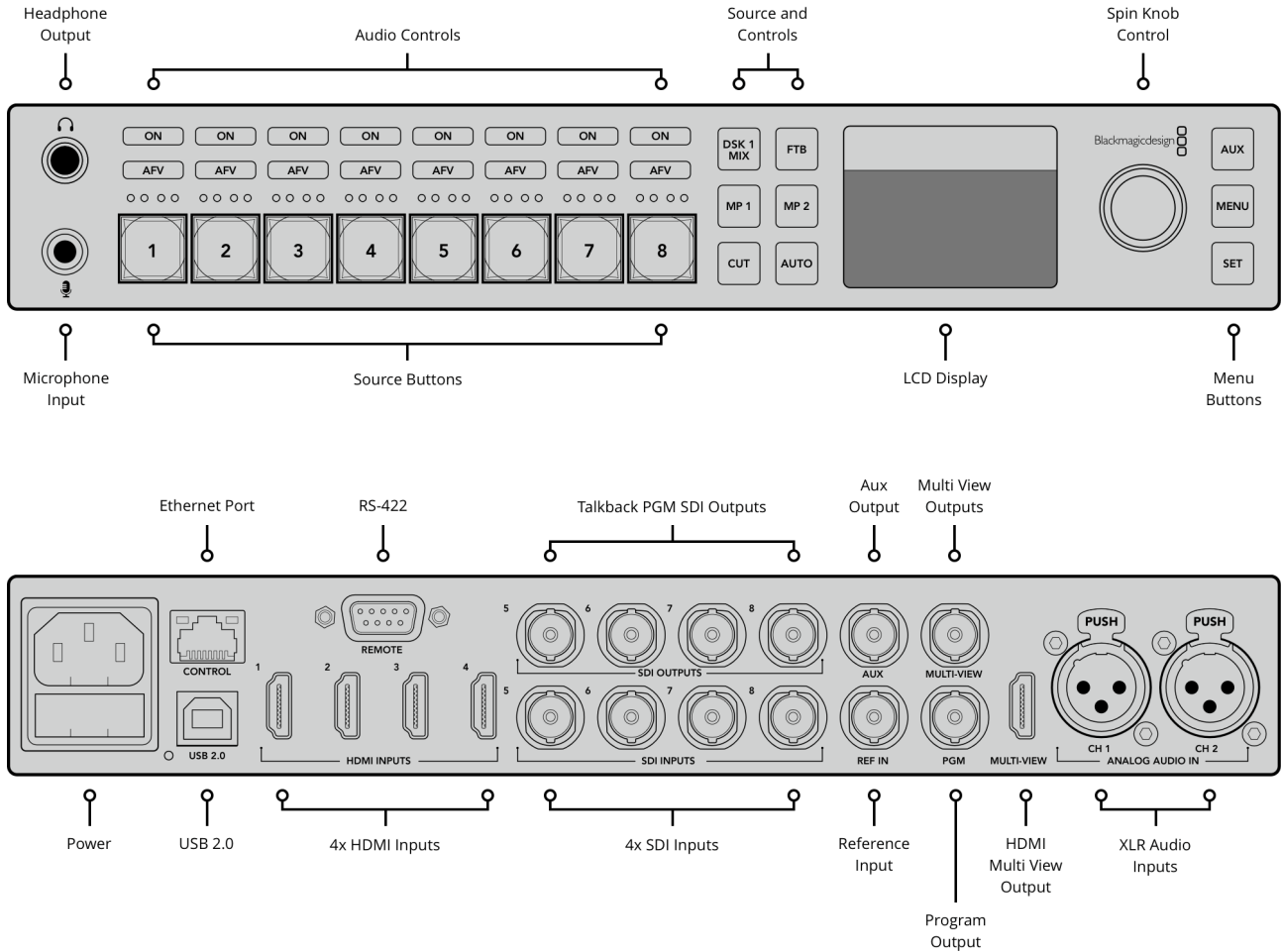
None.

#### SDI Audio Outputs

2 Ch embedded into SDI output.

#### Computer Outputs

None.



## Standards

### SD Video Standards

525i59.94 NTSC 4:3 or 16:9, 625i50  
PAL 4:3 or 16:9

### HD Video Standards

720p50, 720p59.94  
1080p23.98, 1080p24, 1080p25,  
1080p29.97, 1080p50, 1080p59.94,  
1080i50, 1080i59.94

### Ultra HD Video Standards

None.

### SDI Compliance

SMPTE 259M, 292M and 424M.

### Video Sampling

4:2:2 10-bit

### Color Precision

4:2:2 10-bit

### Color Space

4:2:2 YUV

### HDMI Input Resolutions for Computers

720 x 480i 59.94Hz, 720 x 576i 50Hz,  
1280 x 720p 59.94Hz 50Hz and 1920  
x 1080p 23.98, 24, 25, 29.97, 30, 50,  
59.94 and 1920 x 1080i 50 and  
59.94Hz 60Hz.

### Colorspace Conversion

Hardware based real time.

### Processing Delay

6 Lines.

### Audio Mixer

10 input x 2 channel mixer.  
Selectable On/Off/Audio-Follow-Video.  
Level and Peak metering.  
Master gain control. Headphone  
output level control with separate  
mix of Program, Talkback and  
Sidetone.

## Product Specifics

### Upstream Keyers

1

### Downstream Keyers

2

### Chroma Keyers

1

### Linear/Luma Keyers

3

### Talkback Support

Built in, uses aviation headset.

### Mix Minus Support

Yes, on 4 camera PGM outputs.

### Transition Keyer (Stinger/DVE)

DVE only.

### Total Number of Layers

5

### Pattern Generators

2

### Color Generators

2

### DVE with 3D Borders & Drop

#### Shadow

1

### Interface

Minimum monitor resolution of 1366 x 768.

### Number of Windows

1 x 10

### Routable Windows

8 routable and 2 fixed for Program and Preview.

### Tally

Red for program and green for preview indication.

### Tally Output

Added via ethernet connection to Blackmagic Design GPI and Tally Interface product. (Not included.)

### Windows Source Labels

Yes

---

## Multi View Monitoring

### Multi View Monitoring

1 x 10 Views.

### Multi View Video Standard

HD

---

## Media Player

### Media Players

2, with non volatile flash memory.

### Channels

Fill and key for each Media Player.

### Media Pool Still Image Capacity

20 with fill and key.

### Media Pool Clip Capacity

None.

### Media Player Clip Length in 720 HD

None.

### Media Player Clip Length in 1080 HD

None.

### Media Player Clip Length in Ultra HD

None.

### Media Pool Still Image Format

PNG, TGA, BMP, GIF, JPEG and TIFF.

### Media Pool Video File Format

None.

### Media Pool Audio File Format

None.

---

## Control

### Control Panel

Built in control panel. Software control panel included. Supports optional broadcast panel.

### Control Panel Connection

Ethernet supports 10/100/1000 BaseT. Allows direct connection between panel and chassis, or via network. Also used for updating the software.

### Control Panel Compatibility

Includes ATEM Software Control Panel. Also compatible with ATEM 1 M/E Broadcast Panel and ATEM 2 M/E Broadcast Panel.

### Control Panel Included

ATEM Software Control Panel included free for Mac OS X 10.10 Yosemite, Mac OS X 10.11 El Capitan or later and Windows 8.1 64-bit or Windows 10 64-bit.

---

### Software

#### Software Updates

Using USB connection directly connected to Mac OS X or Windows computers. Includes ATEM Switcher Utility.

#### Configuration

Set via ATEM Software Control Panel, excluding ATEM chassis IP address which is set via the ATEM Switcher Utility connected via USB to chassis.

---

### Operating Systems



Mac OS X 10.10 Yosemite,  
Mac OS X 10.11 El Capitan or later.



Windows 8.1 or Windows 10.

---

### Power Requirements

#### Power Supply

1 x internal 110 – 240V AC

#### Power Usage

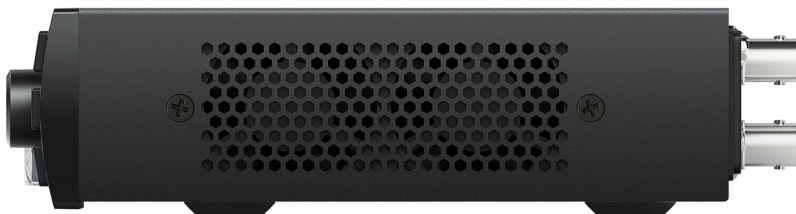
40W

---

## Physical Specifications



11.02 in



1.75 in

6.89 in

  
3.22 lb

## Environmental Specifications

**Operating Temperature:**  
5° C to 40° C (41° - 104°F)

**Storage Temperature:**  
-10° to 60° C (14° to 140° F)

**Relative Humidity:**  
0% to 90% non-condensing

## What's Included

ATEM Television Studio HD

SD card with software and manual

## Warranty

12 Months Limited Manufacturer's  
Warranty.

**Repair policy**

Warranty details can be found in the ATEM Switchers Operation Manual in the support page at [www.blackmagicdesign.com](http://www.blackmagicdesign.com).

---

All items on this website are copyright Blackmagic Design Pty. Ltd. 2017, all rights reserved. All trademarks are property of their respective owners. MSRP excludes sales taxes/duties and shipping costs.

Blackmagic Design Authorized Reseller