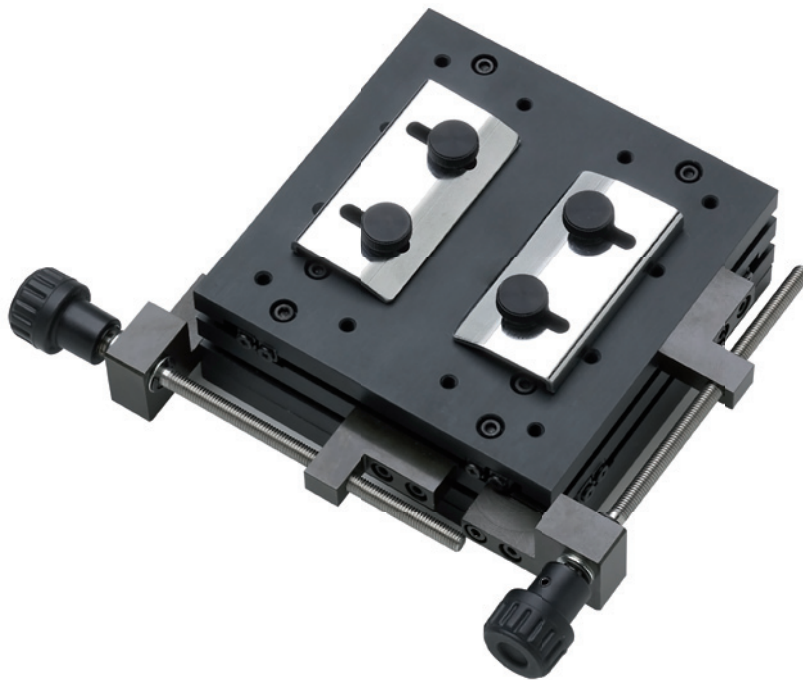


XY-500N

X-Y Stage



Features

- Lower height for large head-room of vertical test stands.
- Metal fixtures are attached.
- Adjustable fixed position to a test stand in the depth direction.

Applications

- Position fine parts for compression.
- Position electric parts on PCB for tensile force.

Specifications

Capacity	tensile force: 500 N compression: 1000 N
Stroke	X-axis, Y-axis each ± 30 mm
Feeding	feed screw 0.8 mm every single turn of the knob
Weight	approx. 1400 g
Accessories	two metal fixtures instruction manual for installation
Recommended test stands	compatible with vertical test stands (not with KV-50N)

Dimensional drawing

